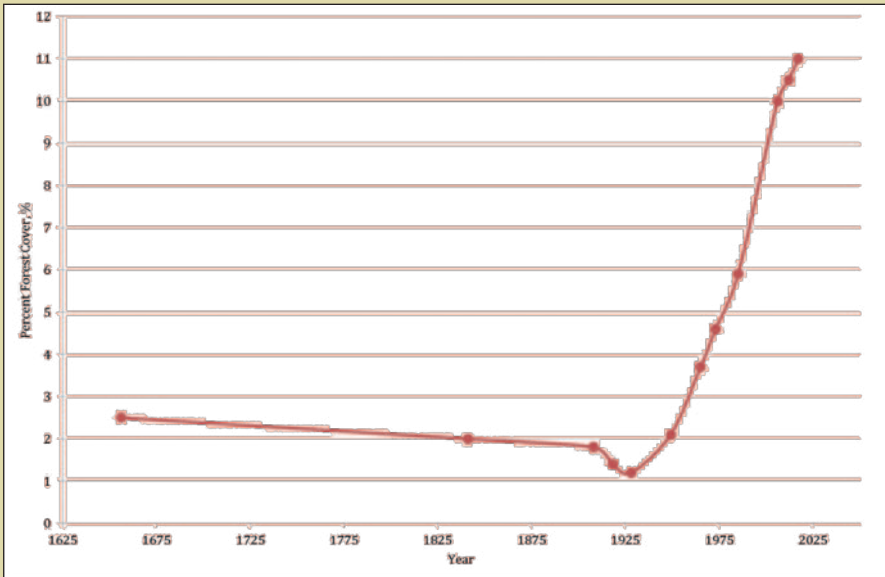
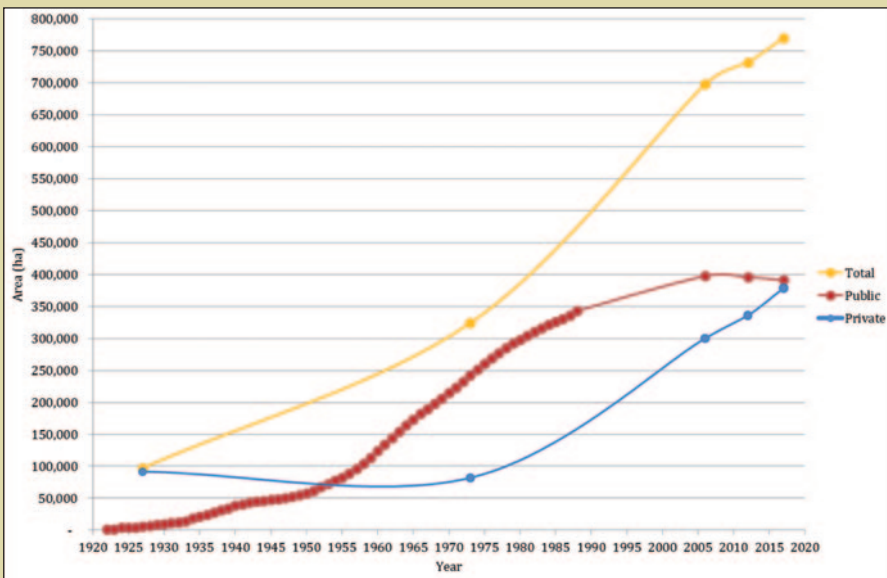


IRELAND'S FOREST COVER, 1656-2017

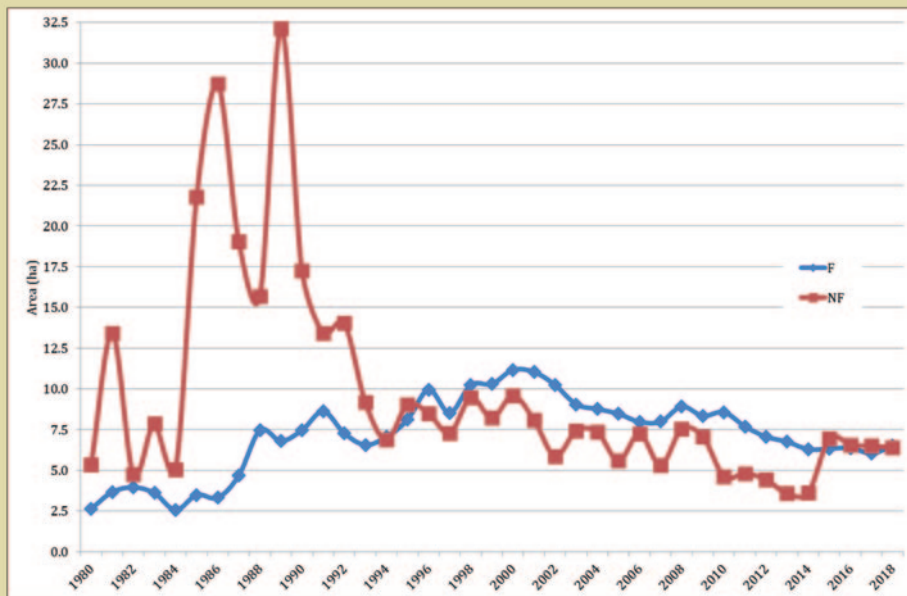


FOREST AREA CHANGE SINCE THE FOUNDATION OF THE STATE, 1922-2017.



Source: Forest Statistics Ireland 2019, Department of Agriculture, Food and the Marine.

AVERAGE AREA OF FARMER/NON-FARMER GRANT-AIDED AFFORESTATION 1980-2018



VALUE OF ECONOMIC ACTIVITY IN THE FOREST SECTOR

	2003 ¹	2012 ²
Growing and harvesting subsector	million, €	
Direct Economic Activity Value	255.4	386.9
Gross Value Added	134.5	136.6
Overall Value to Wider Irish Economy	472.4	688.7
Type 2 Multiplier	1.9	1.78
Wood processing subsector		
Direct Economic Activity Value	975.0	1389.1
Gross Value Added	312.3	391.6
Overall Value to Wider Irish Economy	1650.0	2299.4
Type 2 Multiplier		1.66

¹ The Socioeconomic Contribution of Forestry in Ireland – an Interdisciplinary Approach, 2006. COFORD, Department of Agriculture, Food and the Marine, Dublin.

² Personal Communication. Dr. Richard Moloney, 2014.

Source: Forest Statistics Ireland 2019, Department of Agriculture, Food and the Marine.